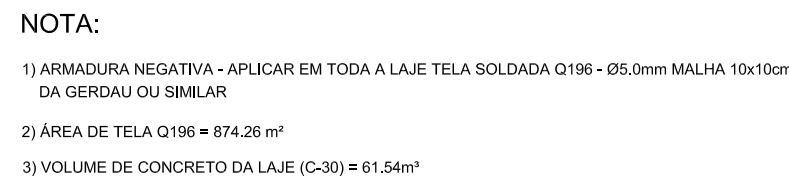


Resumo do aço



AÇO	DIAM (mm)	C.TOTAL (m)	PESO + 10 % (kg)
CA50	6.3	65.5	17.6
	8.0	2591.7	1120.6
	12.5	60.7	64.2
CA60	TR 08844	2042.1	2037.4
	5.0	674.7	114.4
PESO TOTAL (kg)			
CA50	1202.4		
CA60	2151.8		



ARMADURA NORMAL DA TRELHA TR 8645 = "70 8M" DA GERDAU

ARMADURA DE REFORÇO CONFORME INDICADO P/ NEARLUX DE CADA LAJE UTILIZAR LAJE PRE-MOLDADA TRELHAS C/ TRELHA TR 8645 (NBR) = 70 8M DA GERDAU

Nº	ALTERAÇÃO/REVISÕES	REVISADO POR	DATA

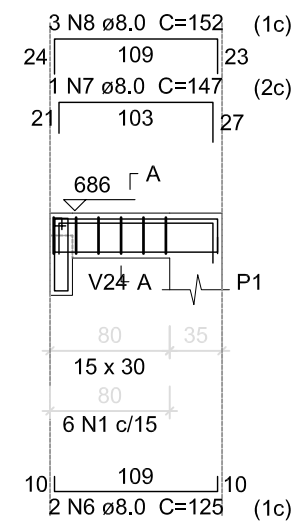
 <p>INSTITUTO FEDERAL SERGIPE</p>	<p>AUTOR DO PROJETO:</p> <p>Engº. Fredrico Damasceno Pinheiro</p> <p>CREA 270082778-3</p>	 <p>adengenharia.eng.br</p>
<p>ENDEREÇO:</p> <p>Rua Dom José Thomaz, 194 - Bairro São José - Aracaju/SE</p> <p>dipop@ifs.edu.br</p> <p>TEL: (79)3711-3139</p>		

PROJETO ESTRUTURAL
CAMPUS JAPARATUBA/SE

CLIENTE:		INSTITUTO FEDERAL DE SERGIPE - CAMPUS JAPARUBA	
ENDEREÇO:	ROD. LÚCIO PRADO, S/N - JAPARUBA/SE	ESCALA:	1:100
PLANTA:	BLOCO SALAS DE AULA ARMAÇÃO DAS VIGOTAS LAJES COBERTURA	DATA:	JUN/2024
		PRANCHA:	19/26

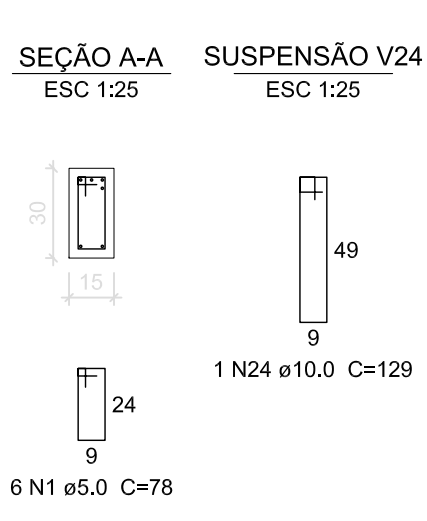
V1 (15 x 30)

ESC 1:50



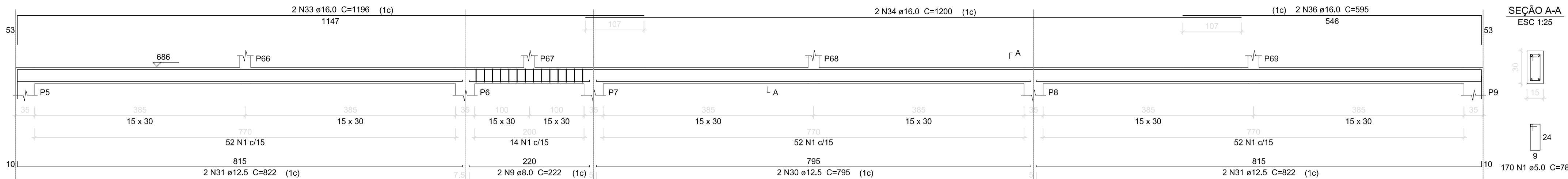
V2 (15 x 30)

ESC 1:50



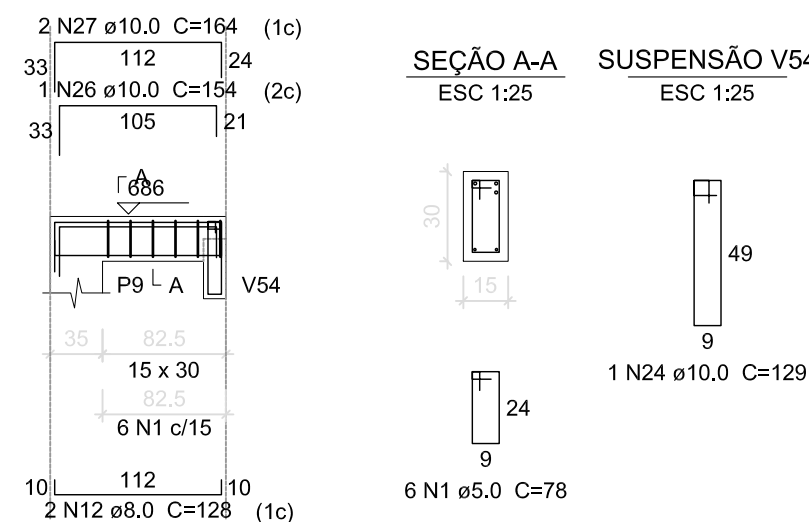
V3 (15 x 30)

ESC 1:50



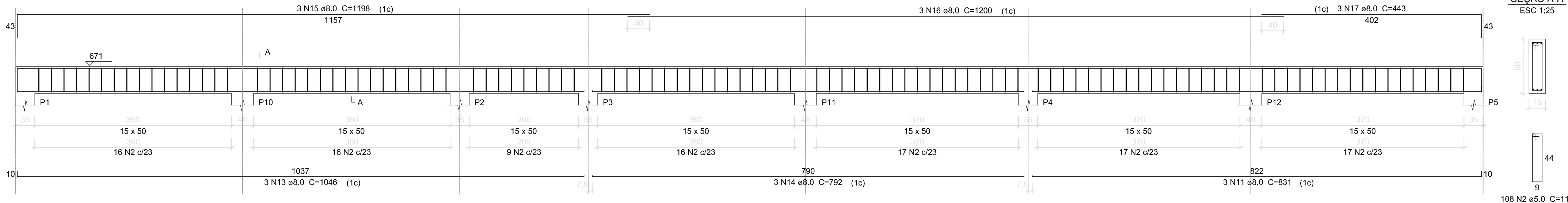
V4 (15 x 30)

ESC 1:50



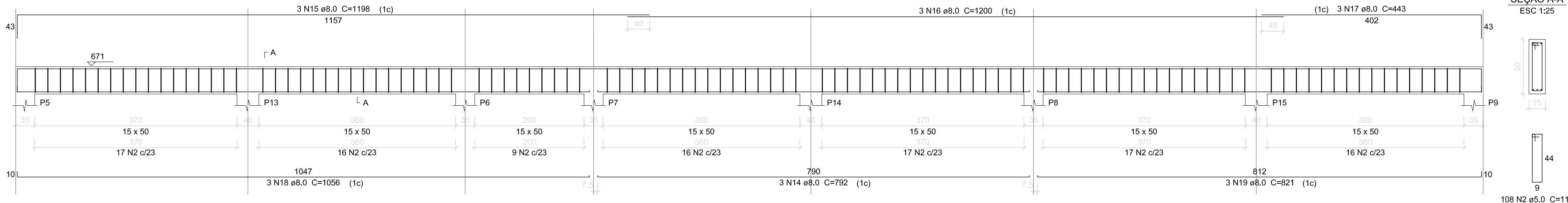
V5 (15 x 50)

ESC 1:50



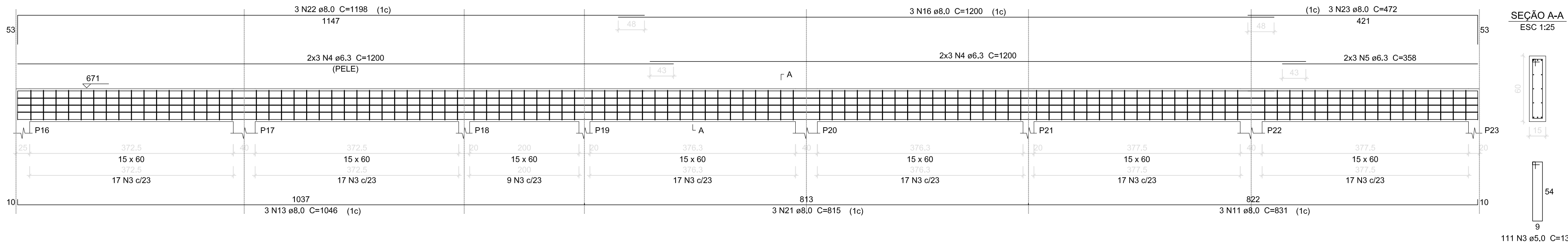
V6 (15 x 50)

ESC 1:50



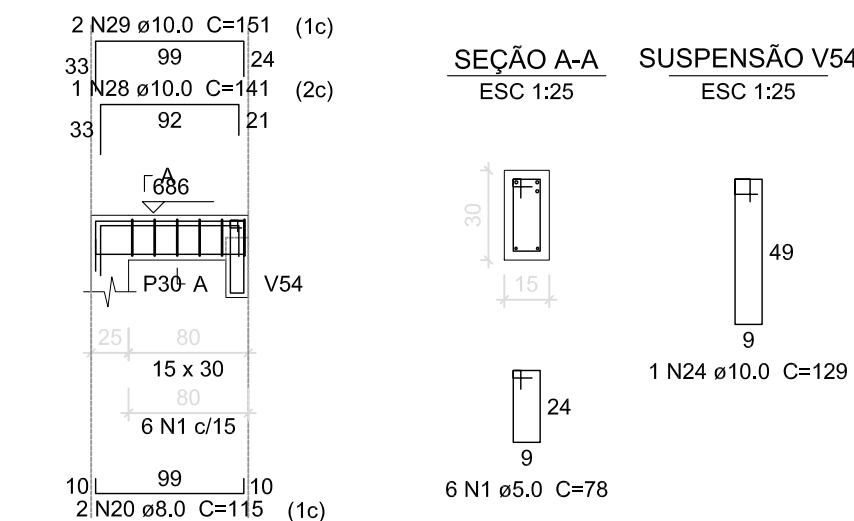
V9 (15 x 60)

ESC 1:50



V8 (15 x 30)

ESC 1:50



Relação do aço

V1	V2	V3			
V4	V5	V6			
V7	V8	V9			
ACO	N	DIAM (mm)	QUANT (Barras)	UNIT (cm)	C.TOTAL (cm)
CA60	1	5.0	367	78	2862
	2	5.0	216	118	2548
	3	5.0	111	138	1531
CA50	4	6.3	12	1200	1440
	5	6.3	6	358	214
	6	8.0	2	125	25
	7	8.0	1	147	14
	8	8.0	3	152	45
	9	8.0	4	222	88
	10	8.0	3	828	248
	11	8.0	9	831	747
	12	8.0	2	128	25
	13	8.0	6	1046	627
	14	8.0	6	792	475
	15	8.0	6	1198	718
	16	8.0	9	1200	1080
	17	8.0	6	443	265
	18	8.0	3	1056	316
	19	8.0	3	821	246
	20	8.0	4	115	46
	21	8.0	3	815	244
22	8.0	3	1198	359	
23	8.0	3	472	141	
24	10.0	4	129	51	
25	10.0	3	810	243	
26	10.0	1	154	15	
27	10.0	2	164	32	
28	10.0	2	141	28	
29	10.0	4	151	60	
30	12.5	4	795	318	
31	12.5	4	822	328	
32	16.0	1	1100	110	
33	16.0	4	1196	478	
34	16.0	4	1200	480	
35	16.0	2	584	116	
36	16.0	2	595	119	

Resumo do aço

ACO	DIAM (mm)	C.TOTAL (m)	PESO + 10 % (kg)
CA50	6.3	165.5	44.5
	8.0	571.8	246.2
	10.0	43.2	23.3
	12.5	64.7	68.5
	16.0	130.5	226.4
CA60	5.0	694.4	117.7

PESO TOTAL (kg)

CA50 617

CA60 117.7

Volume de concreto (C-30) = 9.05 m³

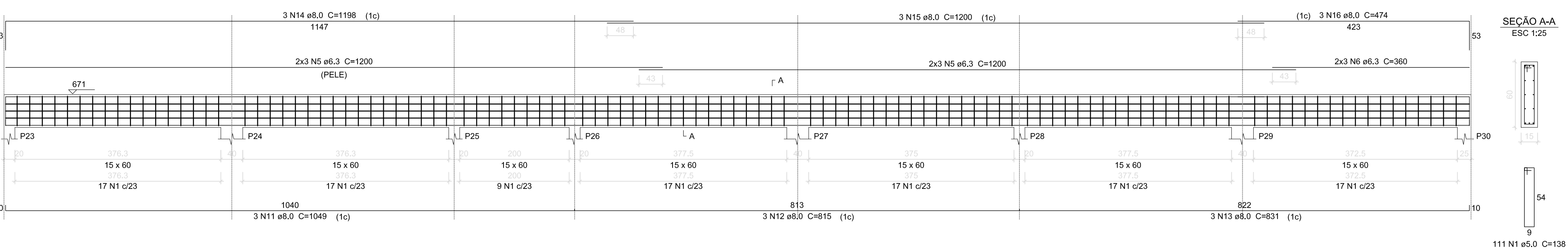
Área de forma = 141.5 m²

Nº	ALTERAÇÃO/REVISÕES	REVISADO POR	DATA
AUTOR DO PROJETO:		INSTITUTO FEDERAL DE SERGIPE - CAMPUS JAPARATUBA	
Engº. Fredrico Damasceno Pinheiro		ESCALA: 1:100	
CREA 270082778-3		DATA: JUN/2024	
ENDEREÇO:		PRANCHA: 20/26	
Rua Dom José Thomaz, 194 - Bairro São José - Aracaju/SE		dipop@ifs.edu.br	
TEL: (79)3711-3139			

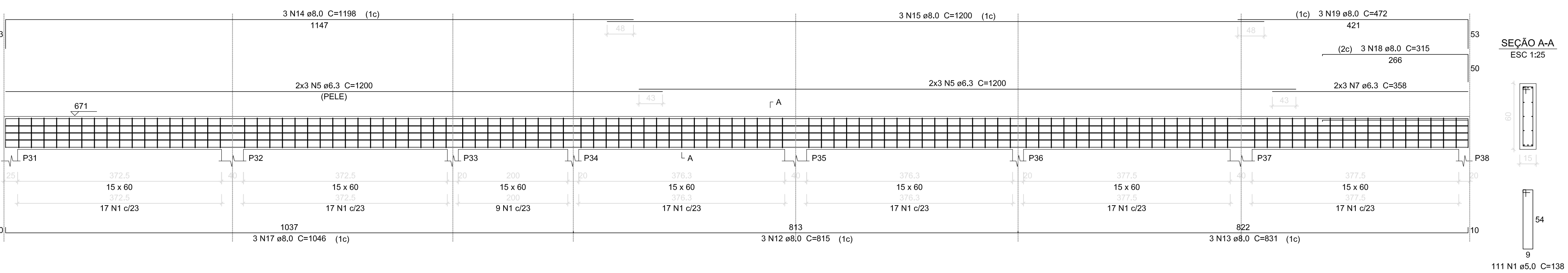
PROJETO ESTRUTURAL
CAMPUS JAPARATUBA/SE

CLIENTE:	INSTITUTO FEDERAL DE SERGIPE - CAMPUS JAPARATUBA		
ENDEREÇO:	ROD. LÚCIO PRADO, S/N - JAPARATUBA/SE		
PLANTA:	BLOCO SALAS DE AULA ARMAÇÃO DAS VIGAS COBERTURA 1-5		
CAMPUS	OPRA	ESPECIALIDADE	PAZ
JAP	CAM	EST	PE
020	026	000	

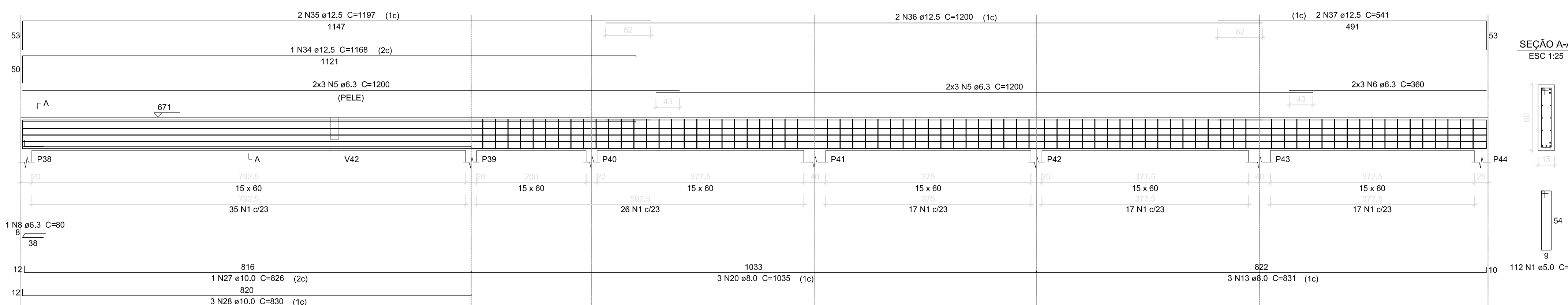
V10 (15 x 60)



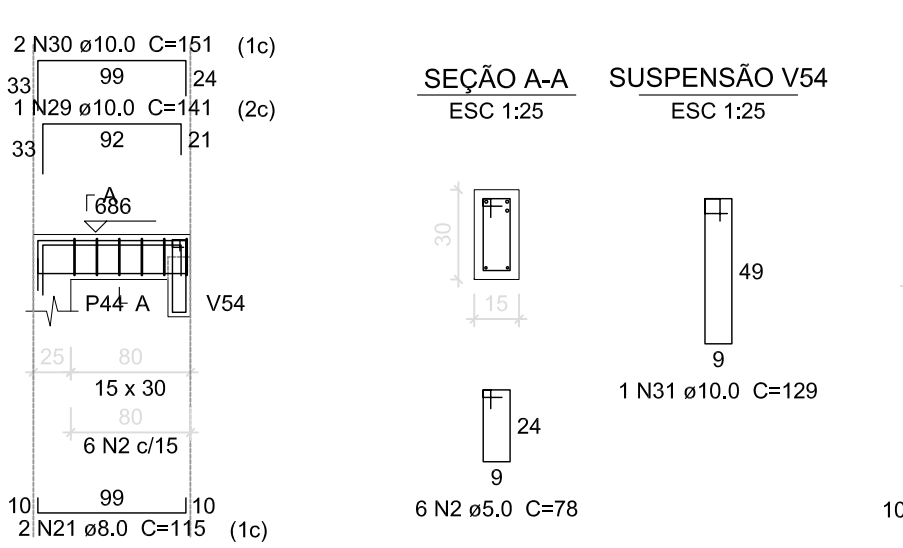
V11 (15 x 60)



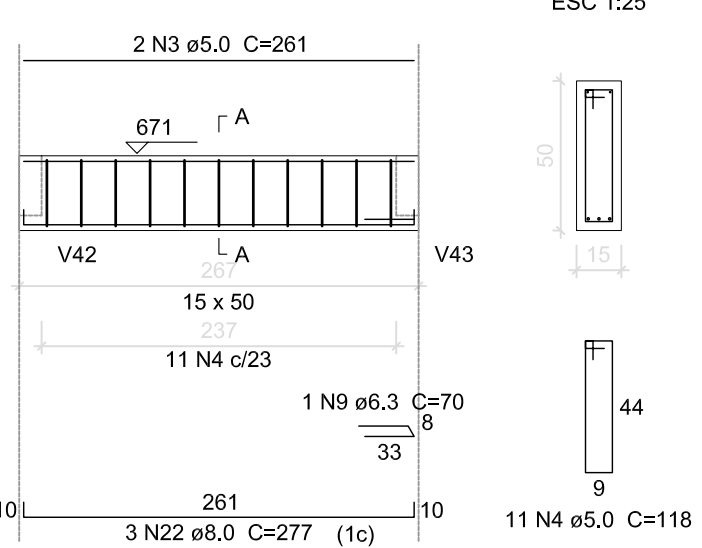
V12 (15 x 60)



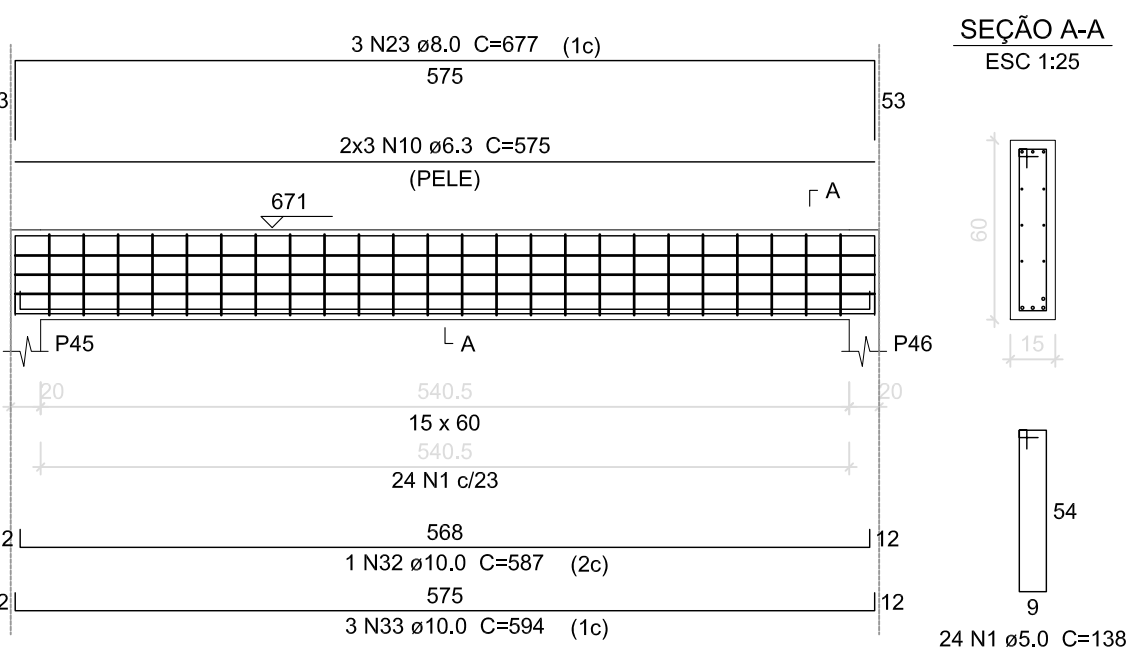
V14 (15 x 30)



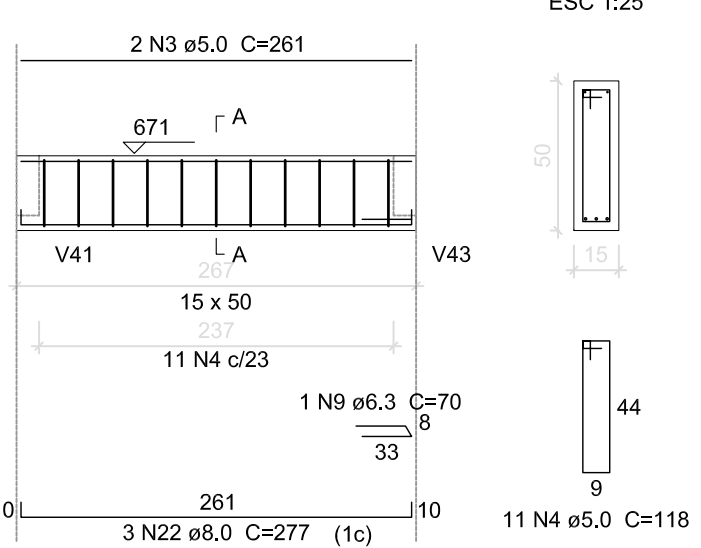
V15 (15 x 50)



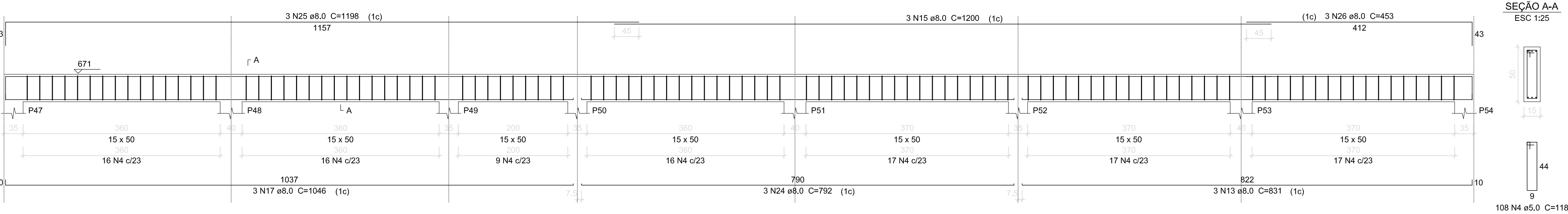
V16 (15 x 60)



V17 (15 x 50)



V18 (15 x 50)



Relação do aço

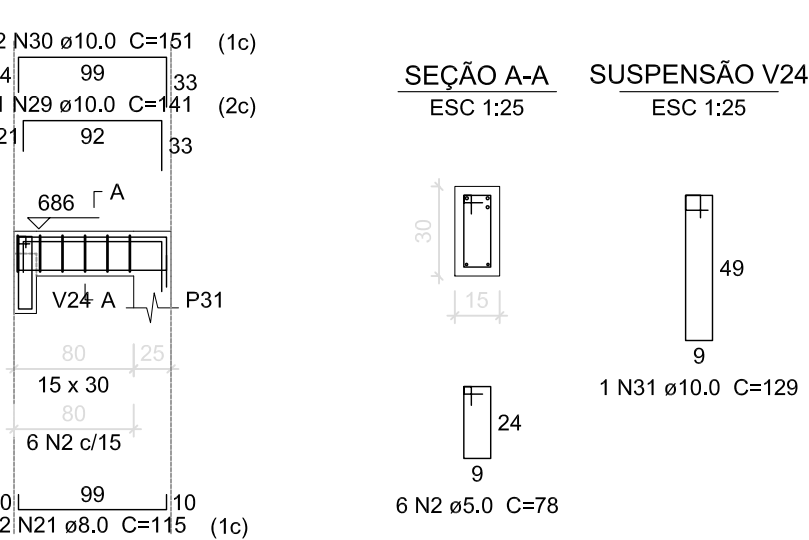
ACO	N	DIAM (mm)	QUANT (Barras)	UNIT (cm)	C.TOTAL (cm)
V10					
V13					
V16					
CA60	1	5.0	358	138	49404
	2	5.0	12	78	938
	3	5.0	4	261	1044
CA50	4	5.0	130	118	15340
	5	6.3	36	1200	43200
	6	6.3	12	360	4320
	7	6.3	6	358	2148
	8	6.3	1	80	80
	9	6.3	2	70	140
	10	6.3	6	575	3450
	11	8.0	3	1049	3147
	12	8.0	6	815	4890
	13	8.0	12	831	9972
	14	8.0	6	1198	7188
	15	8.0	9	1200	10800
	16	8.0	3	474	1422
	17	8.0	6	1046	6276
	18	8.0	3	315	945
	19	8.0	3	472	1416
	20	8.0	3	1035	3105
	21	8.0	4	115	460
	22	8.0	6	277	1662
	23	8.0	3	677	2031
	24	8.0	3	792	2376
	25	8.0	3	1198	3594
	26	8.0	3	453	1359
	27	10.0	1	826	826
	28	10.0	3	830	2490
	29	10.0	2	141	282
	30	10.0	4	151	604
	31	10.0	2	129	258
	32	10.0	1	587	587
	33	10.0	3	594	1782
	34	12.5	1	1168	1168
	35	12.5	2	1197	2394
	36	12.5	2	1200	2400
	37	12.5	2	541	1082

Resumo do aço

ACO	DIAM (mm)	C.TOTAL (m)	PESO + 10 % (kg)
CA50	6.3	533.4	143.6
	8.0	606.5	263.2
	10.0	68.3	46.3
	12.5	70.5	74.6
CA60	5.0	667.3	113.1
PESO TOTAL (kg)			
CA50		527.7	
CA60		113.1	

Volume de concreto (C-30) = 10,26 m³
Área de forma = 154,94 m²

V13 (15 x 30)



SEÇÃO A-A

SUSPENSÃO V24

ESC 1:25

ESC 1:25

ESC 1:25

ESC 1:25

ESC 1:25

ESC 1:25

ESC 1:25

ESC 1:25

ESC 1:25

ESC 1:25

ESC 1:25

ESC 1:25

ESC 1:25

ESC 1:25

ESC 1:25

ESC 1:25

ESC 1:25

ESC 1:25

ESC 1:25

ESC 1:25

ESC 1:25

ESC 1:25

ESC 1:25

ESC 1:25

ESC 1:25

ESC 1:25

ESC 1:25

ESC 1:25

ESC 1:25

ESC 1:25

ESC 1:25

ESC 1:25

ESC 1:25

ESC 1:25

ESC 1:25

ESC 1:25

ESC 1:25

ESC 1:25

ESC 1:25

ESC 1:25

ESC 1:25

ESC 1:25

ESC 1:25

ESC 1:25

ESC 1:25

ESC 1:25

ESC 1:25

ESC 1:25

ESC 1:25

ESC 1:25

ESC 1:25

ESC 1:25

ESC 1:25

ESC 1:25

ESC 1:25

ESC 1:25

ESC 1:25

ESC 1:25

ESC 1:25

ESC 1:25

ESC 1:25

ESC 1:25

ESC 1:25

ESC 1:25

ESC 1:25

ESC 1:25

ESC 1:25

ESC 1:25

ESC 1:25

ESC 1:25

ESC 1:25

ESC 1:25

ESC 1:25

ESC 1:25

ESC 1:25

ESC 1:25

ESC 1:25

ESC 1:25

ESC 1:25

ESC 1:25

ESC 1:25

ESC 1:25

ESC 1:25

ESC 1:25

ESC 1:25

ESC 1:25

ESC 1:25

ESC 1:25

ESC 1:25

ESC 1:25

ESC 1:25

ESC 1:25

ESC 1:25

ESC 1:25

PROJETO ESTRUTURAL
CAMPUS JAPARATUBA/SE

CLIENTE: INSTITUTO FEDERAL DE SERGIPE - CAMPUS JAPARATUBA

ENDEREÇO: ROD. LÚCIO PRADO, S/N - JAPARATUBA/SE

ESCALA: 1:100

PLANTA: BLOCO SALAS DE AULA
ARMAÇÃO DAS VIGAS COBERTURA 2-5

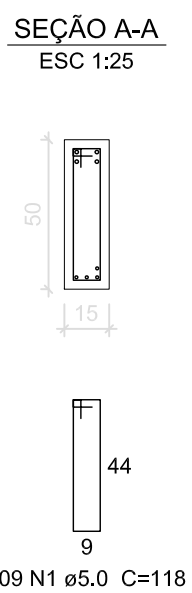
DATA: JUN/2024

PRANCHA:

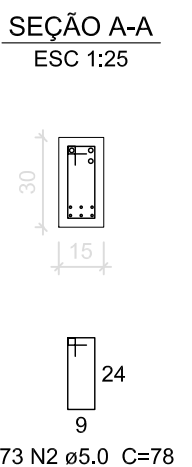
21/26

CAMPUS	OPRA	ESPECIALIDADE	PAZ	SERIAL	QUANTITATIVO	REVISÃO
JAP	CAM	ESTR	PE	021	026	000

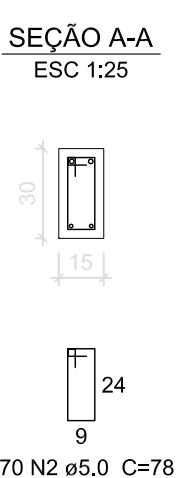
ESC 1:50



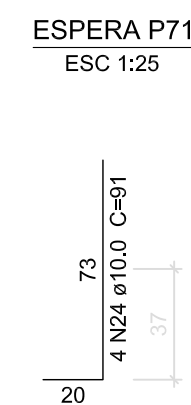
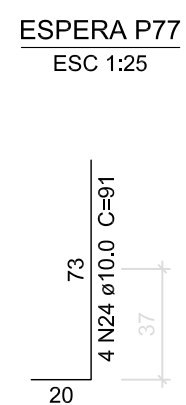
ESC 1:50



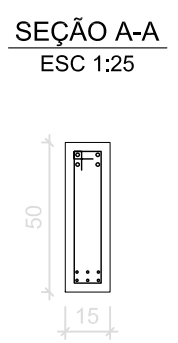
ESC 1:50



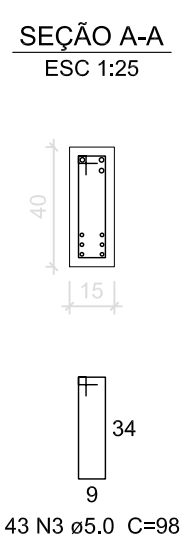
ESC 1:50



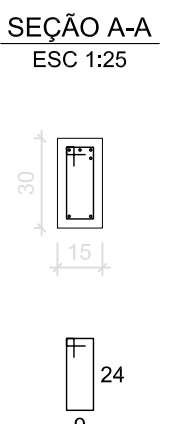
ESC 1:50



ESC 1:50



ESC 1:50



	V20	V21			
	V23	V24			
	V26				
AÇO	N	DIAM (mm)	QUANT (Barras)	UNIT (cm)	C.TOTAL
CA60	1	5.0	177	118	20886
	2	5.0	353	78	27534
	3	5.0	131	98	12838
CA50	4	8.0	4	24	96
	5	5.0	8	58	464
	6	5.0	3	107	3087
	7	8.0	3	821	2463
	8	8.0	2	125	250
	9	8.0	1	147	147
	10	8.0	3	152	456
	11	8.0	3	222	888
	12	8.0	3	828	2484
	13	8.0	3	831	2493
	14	8.0	2	128	256
	15	8.0	4	779	3116
	16	8.0	2	1044	2088
	17	8.0	3	761	2283
	18	8.0	3	1026	3078
	19	10.0	1	817	817
	20	10.0	3	820	2460
21	10.0	1	129	129	
22	10.0	3	810	2430	
23	10.0	2	174	348	
24	10.0	16	91	1456	
25	10.0	2	1198	2396	
26	10.0	2	725	1450	
27	12.5	2	1127	2254	
28	12.5	4	1197	4788	
29	12.5	2	1280	2560	
30	12.5	2	539	1078	
31	12.5	4	795	3180	
32	12.5	4	822	3288	
33	12.5	2	762	1524	
34	12.5	1	358	358	
35	12.5	1	366	366	
36	12.5	1	1140	1140	
37	12.5	1	1197	1197	
38	12.5	1	753	753	
39	12.5	2	766	1532	
40	12.5	2	739	1478	
41	12.5	2	746	1492	
42	12.5	2	753	1506	
43	16.0	1	1102	1102	
44	16.0	4	1196	4784	
45	16.0	4	1200	4800	
46	16.0	2	596	1192	
47	16.0	2	595	1190	
48	16.0	2	820	1640	
49	16.0	2	828	1656	

AÇO	DIAM (mm)	C.TOTAL (m)	PESO + 10 % (kg)
CA50	8.0	230.9	100.2
	10.0	114.9	77.9
	12.5	283.2	300.1
	16.0	155.3	269.5
CA60	5.0	618.2	104.8
PESO TOTAL (kg)			
CA50	747.7		
CA60	104.8		

Volume de concreto (C-30) = 7.43 m³
Área de forma = 118.02 m²

INSTITUTO FEDERAL
SERGIPE

AUTOR DO PROJETO:

Eng°. Fredrico Damasceno Pinheiro
CREA 270082778-3

adengenharia.eng.br

ENDEREÇO:

Rua Dom José Thomaz, 194 - Bairro São José - Aracaju/SE
dipopo@ifs.edu.br

TEL: (79)3711-3139

CIENTE:		INSTITUTO FEDERAL DE SERGIPE - CAMPUS JAPARUBA	
ENDEREÇO:	ROD. LÚCIO PRADO, S/N - JAPARUBA/SE		ESCALA: 1:100
PLANTA:	BLOCO SALAS DE AULA ARMAÇÃO DAS VIGAS COBERTURA 3-5		DATA: JUN/2024
			PRANCHA:
			22/26